

==== Shimadzu LabSolutions Analysis Report =====

Sample Name : DL V37 R1
 Sample ID :
 Data Filename : DL V37 R1_20250409_DL V37_SFB_B_ST1_0.8 mL_45 min_Start_001.lcd
 Method Filename : SFB_B_ST1_0.8 mL_45 min_Start.lcm
 Batch Filename : 20250324_DL V37-38_Postrun.lcb
 Vial # : 3-1
 Injection Volume : 10 uL
 Date Acquired : 4/9/2025 9:33:18 PM
 Date Processed : 4/22/2025 11:12:13 AM
 Sample Type : Unknown
 Acquired by : System Administrator
 Processed by : System Administrator

<Method>

<<Header>>

Generated : 4/24/2024 3:47:23 PM
 GeneratedBy : System Administrator
 Modified : 4/22/2025 8:54:48 AM
 ModifiedBy : System Administrator

<<System Controller>>

Model : SCL-40
 Event1 : Off
 Event2 : Off
 Sample Load Timing : Off

<<Data Acquisition>>

LC Stop Time : 45.00 min
 Detector A Name : Detector A
 Detector A Sampling Frequency : 2 Hz
 Detector A Start Time : 0.00 min
 Detector A End Time : 45.00 min

<<Pump>>

Mode : Isocratic flow
 Pump A : LC-40D
 Pump A Flow/Pressure : Flow
 Pump System A Flow : 0.8000 mL/min
 Pump System A Flow Slope : 20.00 min
 Pump A PressMax : 90 bar
 Pump A PressMin : 0 bar
 Pump A Valve Model : Switching Valve
 Pump A Valve : B
 Pump A Compressibility Setting : On
 Pump A Mobile Phase Settings : 0.45 /GPa

<<Autosampler>>

Autosampler Model : SIL-40
 Enable Autosampler : Use
 Rinse Type : External only
 Specify Plate : Off
 Rinsing Volume : 500 uL
 Cut Off Loop : Off
 Specify Needle Stroke : Off
 Rinsing Speed : 35 uL/sec
 Sampling Speed : 5.0 uL/sec
 Rinse Port R0 Purge Time : 2.0 min
 Measuring Line Purge Time : 5.0 min
 Rinse Mode : Before and after aspiration
 Rinse Dip Time : 0 sec
 Measuring Line Purge Volume : 100 uL
 Air Gap Volume : Off
 Rinse Port Liquid : R0

<<Sample Pretreatment>>

Mode : Standard

<<Oven>>

Oven Model : CTO-40C
 Enable Oven : Use
 Oven Temperature : 25 C
 Maximum Temperature : 105 C

Ready Check : On
 Wait Time : 5 min
 Ready Range : 1.0 C
 Fan Speed : Auto
 Cooler Mode : Auto
 Valve 1/L : FCV-0206
 Valve 1/L Position : 1

<<Detector A>>

Model : RID-20A
 Mode : Analytical
 Polarity : +
 Use Cell Temp. : Use
 Cell Temp. : 40.0 C
 Response : 1.5 sec
 Intensity Unit : Volt
 Auxiliary Range : 1.0E-3 RIU/V
 Recorder Range : 100.00 uRIU/FS
 Synchronize with Auxiliary : Off
 Purge Time : 20 min

<<LC Time Program>>

Time	Module	Command	Value	Comment
0.01	RID-20A(DET.A)	Zero		
45.00	Controller	Stop		

<<Peak Integration>>

<Detector A>

Channel : Ch1
 Width : 5 sec
 Slope : 2000 uV/min
 Drift : 0 uV/min
 T.DBL : 1000 min
 Max Slices : 0
 Peak Top Detection : Normal
 RT Compensation Mode : Fine
 Min.Area/Height is made effective in Manual Integration : Off
 Min.Area/Height : 1000 counts
 Calculated by : Area
 Noise Calculation Settings : Noise Data : Current Data
 Calculation Method : ASTM
 Range : Whole Range
 Interval : 0.5 min
 Include the Peak Detected Range : Off
 Detection Limit Coefficient : 3.3
 Quantitative Limit Coefficient : 10.0
 Drift Calculation Settings : 0.000 - 15.000 min

<<Integration Time Program(Method)>>

<Detector A>

Channel : Ch1
 Time Program : None

<<Integration Time Program(Data)>>

<Detector A>

Channel	Time Program	No. Enable	Time(min)	Command	Value
1	[Yes]		12.141	Split Peak	
2	[Yes]		12.141	Split Peak	

<<Identification>>

<Detector A>

Window/Band : Window
 Window : 5.00 %
 Identification Method : Absolute
 Peak Selection : Closest Peak
 Display not identified peaks : Not display

<<Quantitative>>

<Detector A>

Quantitative Method : External Standard
 Calculated by : Area
 # of Calibration Levels : 14
 Curve Fit Type : Linear
 Zero : Not Forced
 Weighting Method : None
 X Axis of Calib. Curve : Conc.
 Units : mol/L
 Format of Conc. : Decimals

Format of Conc. Figure	: 5
Group Type	: Not Used
Check %Dev(Standard)	: No
Check Accuracy[%](Standard)	: No
Check %Dev(Control)	: No
Check Accuracy[%](Control)	: No
Check %Dev(Additive)	: No
Check Accuracy[%](Additive)	: No
Check %Dev(Unknown)	: No
Check Accuracy[%](Unknown)	: No
Check Quantitation Limit	: No
Check Detect Limit	: No

<<Compound Table>>

<Detector A>

```

ID#           : 1
Name          : Methanol
Type          : Target
Channel       : Ch1
Retention Time: 14.400 min
Retention Index: 0
Concentration : [1]=3.016738           [2]=1.049395           [3]=0.4943277
                [4]=0.2893701         [5]=0.1127578         [6]=0.06136267
                [7]=0.01619725        [8]=3.016738         [9]=1.049395
                [10]=0.4943277        [11]=0.2893701       [12]=0.1127578
                [13]=0.06136267       [14]=0.01619725
Peak Selection : Default(Closest Peak)
Calculated by  : Default(Area)
Curve Fit Type : Default(Linear)
Zero          : Default(Not Forced)
Weight        : Default(None)
Window/Band   : Default(Window)
Spiked        : 0.000
1st Coefficient: 4.720087e+005
Intersection   : 1.693726e+003
Correction Factor: 1.000000
Standard concentration factor : 1.000000

```

```

ID#                : 2
Name               : Glycerin
Type              : Target
Channel           : Ch1
Retention Time    : 10.000 min
Retention Index   : 0
Concentration     : [1]=2.958375          [2]=1.078646          [3]=0.5353454
                  [4]=0.3066948          [5]=0.114594          [6]=0.05901699
                  [7]=0.0117174          [8]=2.958375          [9]=1.078646
                  [10]=0.5353454         [11]=0.3066948        [12]=0.114594
                  [13]=0.05901699        [14]=0.0117174
Peak Selection    : Default(Closest Peak)
Calculated by    : Default(Area)
Curve Fit Type   : Default(Linear)
Zero             : Default(Not Forced)
Weight           : Default(None)
Window/Band      : Default(Window)
Spiked           : 0.000
1st Coefficient  : 7.326784e+006
Intersection     : 2.573900e+005
Correction Factor : 1.000000
Standard concentration factor : 1.000000

```

```

ID#           : 3
Name          : n-Propanol
Type         : Target
Channel      : Ch1
Retention Time: 20.000 min
Retention Index: 0
Concentration : [1]=3.02526           [2]=1.092217           [3]=0.5139845
               [4]=0.3105323         [5]=0.09785473        [6]=0.04497364
               [7]=0.01087275        [8]=3.02526           [9]=1.092217
               [10]=0.5139845         [11]=0.3105323        [12]=0.09785473
               [13]=0.04497364        [14]=0.01087275
Peak Selection : Default(Closest Peak)
Calculated by  : Default(Area)
Curve Fit Type : Default(Linear)
Zero          : Default(Not Forced)
Weight        : Default(None)
Window/Band   : Default(Window)
Spiked        : 0.000

```

1st Coefficient : 3.955755e+006
 Intersection : -2.585461e+004
 Correction Factor : 1.000000
 Standard concentration factor : 1.000000

ID# : 4
 Name : 1,2 Propandiol
 Type : Target
 Channel : Ch1
 Retention Time : 12.400 min
 Retention Index : 0
 Concentration : [1]=2.977546 [2]=1.016412 [3]=0.5030017
 [4]=0.3027638 [5]=0.1023958 [6]=0.04970167
 [7]=0.01157971 [8]=2.977546 [9]=1.016412
 [10]=0.5030017 [11]=0.3027638 [12]=0.1023958
 [13]=0.04970167 [14]=0.01157971

Peak Selection : Default(Closest Peak)
 Calculated by : Default(Area)
 Curve Fit Type : Default(Linear)
 Zero : Default(Not Forced)
 Weight : Default(None)
 Window/Band : Default(Window)
 Spiked : 0.000
 1st Coefficient : 5.771075e+006
 Intersection : 6.007717e+004
 Correction Factor : 1.000000
 Standard concentration factor : 1.000000

ID# : 5
 Name : 1,3 Propandiol
 Type : Target
 Channel : Ch1
 Retention Time : 13.000 min
 Retention Index : 0
 Concentration : [1]=2.976375 [2]=0.9968958 [3]=0.4990984
 [4]=0.2900131 [5]=0.10734 [6]=0.04944145
 [7]=0.0100184 [8]=2.976375 [9]=0.9968958
 [10]=0.4990984 [11]=0.2900131 [12]=0.10734
 [13]=0.04944145 [14]=0.0100184

Peak Selection : Default(Closest Peak)
 Calculated by : Default(Area)
 Curve Fit Type : Default(Linear)
 Zero : Default(Not Forced)
 Weight : Default(None)
 Window/Band : Default(Window)
 Spiked : 0.000
 1st Coefficient : 5.532080e+006
 Intersection : 6.014722e+004
 Correction Factor : 1.000000
 Standard concentration factor : 1.000000

ID# : 6
 Name : iso-Propanol
 Type : Target
 Channel : Ch1
 Retention Time : 16.825 min
 Retention Index : 0
 Concentration : [1]=3.03666 [2]=1.003405 [3]=0.5418687
 [4]=0.3101858 [5]=0.1067771 [6]=0.04972951
 [7]=0.01397083 [8]=3.03666 [9]=1.003405
 [10]=0.5418687 [11]=0.3101858 [12]=0.1067771
 [13]=0.04972951 [14]=0.01397083

Peak Selection : Default(Closest Peak)
 Calculated by : Default(Area)
 Curve Fit Type : Default(Linear)
 Zero : Default(Not Forced)
 Weight : Default(None)
 Window/Band : Default(Window)
 Spiked : 0.000
 1st Coefficient : 3.797216e+006
 Intersection : -2.284739e+004
 Correction Factor : 1.000000
 Standard concentration factor : 1.000000

ID# : 7
 Name : Hydroxyacetone
 Type : Target
 Channel : Ch1
 Retention Time : 13.300 min

Retention Index : 0
Concentration : [1]=2.855514 [2]=0.9609004 [3]=0.4875675
[4]=0.3072624 [5]=0.1038742 [6]=0.04860286
[7]=0.009361501 [8]=2.855514 [9]=0.9609004
[10]=0.4875675 [11]=0.3072624 [12]=0.1038742
[13]=0.04860286 [14]=0.009361501
Peak Selection : Default(Closest Peak)
Calculated by : Default(Area)
Curve Fit Type : Default(Linear)
Zero : Default(Not Forced)
Weight : Default(None)
Window/Band : Default(Window)
Spiked : 0.000
1st Coefficient : 4.865699e+006
Intersection : 5.855022e+004
Correction Factor : 1.000000
Standard concentration factor : 1.000000

ID# : 8
Name : Ethylenglykol
Type : Target
Channel : Ch1
Retention Time : 12.200 min
Retention Index : 0
Concentration : [1]=2.933794 [2]=1.030353 [3]=0.4898163
[4]=0.3033639 [5]=0.09840986 [6]=0.059971
[7]=0.01068632 [8]=2.933794 [9]=1.030353
[10]=0.4898163 [11]=0.3033639 [12]=0.09840986
[13]=0.059971 [14]=0.01068632
Peak Selection : Default(Closest Peak)
Calculated by : Default(Area)
Curve Fit Type : Default(Linear)
Zero : Default(Not Forced)
Weight : Default(None)
Window/Band : Default(Window)
Spiked : 0.000
1st Coefficient : 4.284813e+006
Intersection : 4.449721e+003
Correction Factor : 1.000000
Standard concentration factor : 1.000000

ID# : 9
Name : Ethanol
Type : Target
Channel : Ch1
Retention Time : 16.000 min
Retention Index : 0
Concentration : [1]=3.010594 [2]=1.02339 [3]=0.5257763
[4]=0.2939754 [5]=0.0961865 [6]=0.04960971
[7]=0.01299818 [8]=3.010594 [9]=1.02339
[10]=0.5257763 [11]=0.2939754 [12]=0.0961865
[13]=0.04960971 [14]=0.01299818
Peak Selection : Default(Closest Peak)
Calculated by : Default(Area)
Curve Fit Type : Default(Linear)
Zero : Default(Not Forced)
Weight : Default(None)
Window/Band : Default(Window)
Spiked : 0.000
1st Coefficient : 2.109543e+006
Intersection : -9.590194e+003
Correction Factor : 1.000000
Standard concentration factor : 1.000000

ID# : 10
Name : Propionsäure
Type : Target
Channel : Ch1
Retention Time : 13.600 min
Retention Index : 0
Concentration : [1]=2.962704 [2]=0.9915078 [3]=0.5019324
[4]=0.3085198 [5]=0.1036906 [6]=0.04835313
[7]=0.01168534 [8]=2.962704 [9]=0.9915078
[10]=0.5019324 [11]=0.3085198 [12]=0.1036906
[13]=0.04835313 [14]=0.01168534
Peak Selection : Default(Closest Peak)
Calculated by : Default(Area)
Curve Fit Type : Default(Linear)
Zero : Default(Not Forced)

Weight : Default(None)
 Window/Band : Default(Window)
 Spiked : 0.000
 1st Coefficient : 4.601450e+006
 Intersection : -1.609005e+003
 Correction Factor : 1.000000
 Standard concentration factor : 1.000000

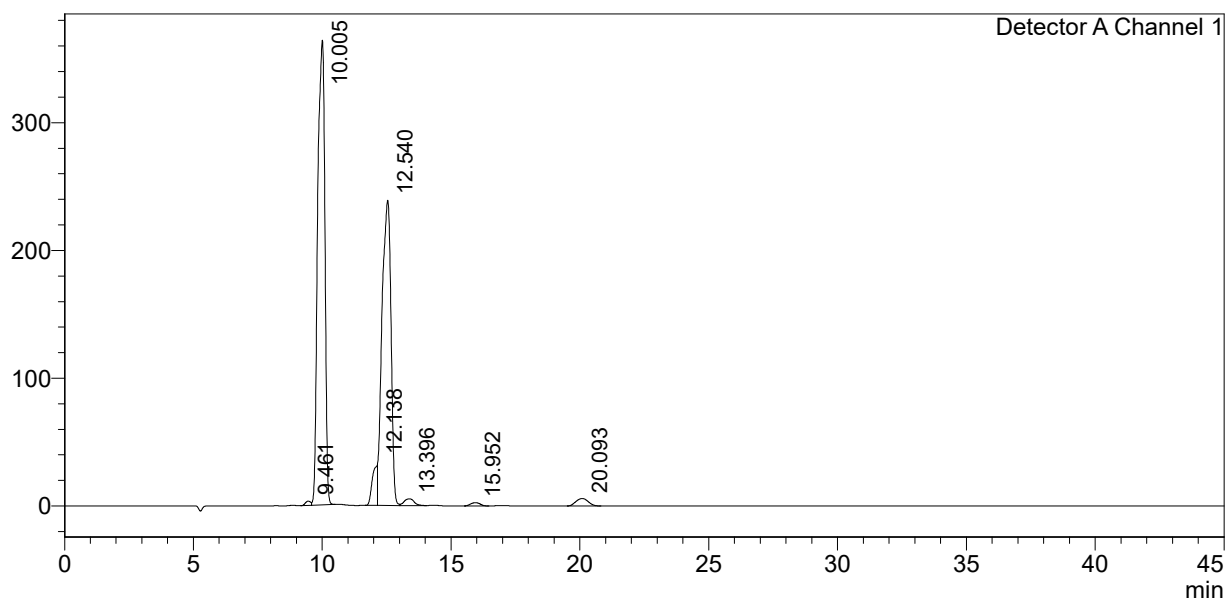
<<Column Performance>>

<Detector A>

Calculation Method : USP
 Unretained Peak Time : Time at 1st Peak
 Column Length : 150 mm
 Calculate Identified Peaks Only : Off
 Calculation of Relative Retention Time : Off

<Chromatogram>

mV



<Peak Table>

Detector A Channel 1

Peak#	Ret. Time	Area	Height	Conc.	Unit	Mark	Name
1	9.461	48843	3421	0.000			
2	10.005	7053017	363614	0.928	mol/L	V	Glycerin
3	12.138	432514	31405	0.100	mol/L	M	Ethylenglykol
4	12.540	5791018	238962	0.993	mol/L	V M	1,2 Propandiol
5	13.396	142156	5232	0.017	mol/L	V	Hydroxyacetone
6	15.952	62977	2469	0.034	mol/L		Ethanol
7	20.093	191828	5789	0.055	mol/L		n-Propanol
Total		13722352	650891				